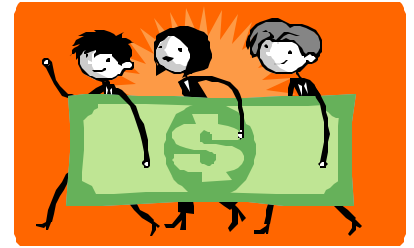


Date: 01/25/06

Time: 9:00-12:00

Millage Workshop



Sponsored by the Lafourche
Parish Government and the
Lafourche Parish Assessor's
Office

Date: 1/25/06

Registration: 8:30-9

Presentation: 9-12pm

Location: Nicholls State
University

Directions: Off of Leighton
Drive in the Bollinger
Student Union #12 on
the attached map.



*Ms. Paulette Jackson, Tax
Review Officer with the LA
Office of Legislative Auditing
along with Ms. Joy Irwin, Director
of Advisory Services, and Ms. Jo
Ann Johnson, Engagement
Administrator Assistant,
will be presenting.*

Contact Persons:
Tara LeBlanc or Lea Danos

***RSVP to have a reserved
parking spot***

Fax: 985-446-9964

*E-mail:
purchasing@lafourchegov.org*